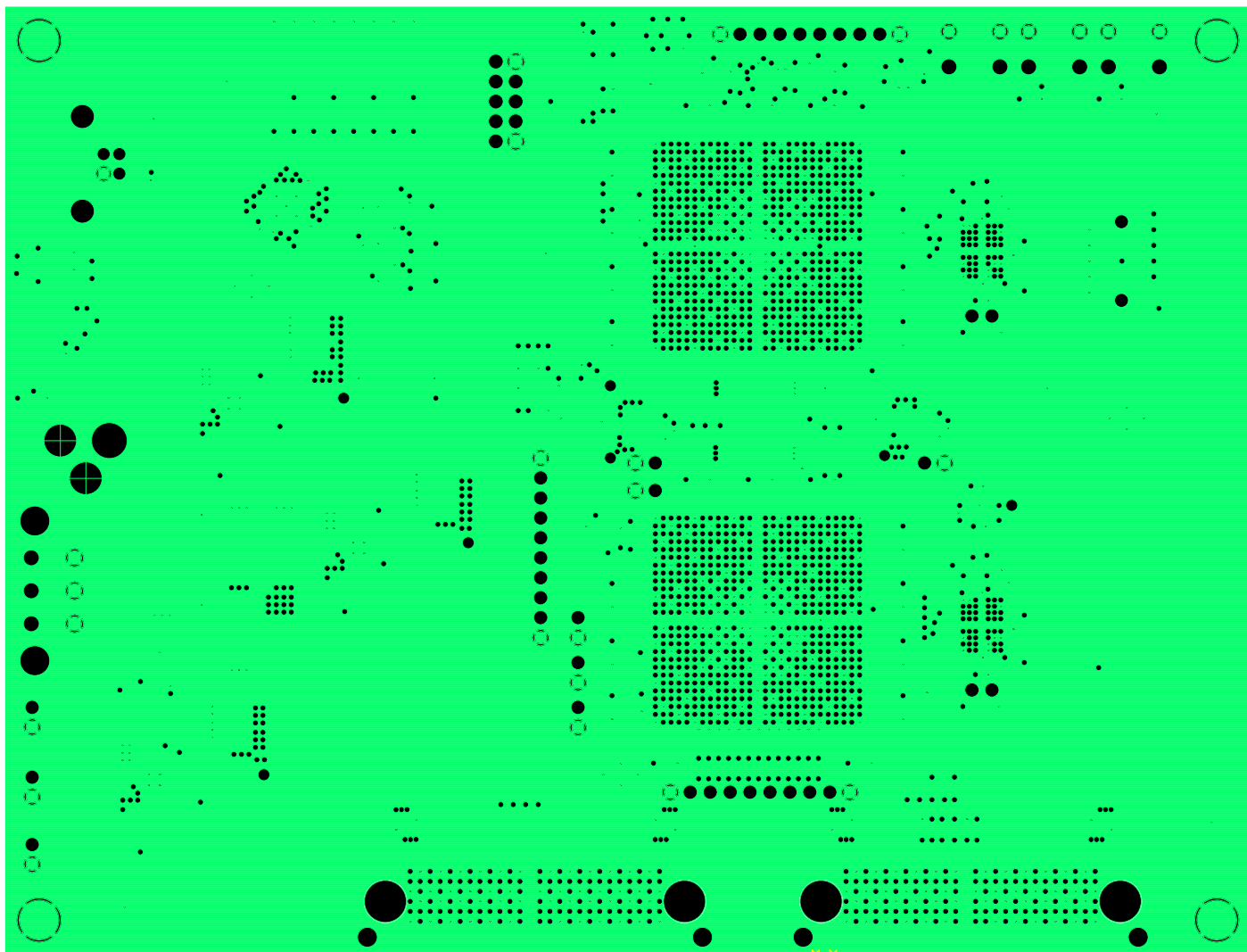
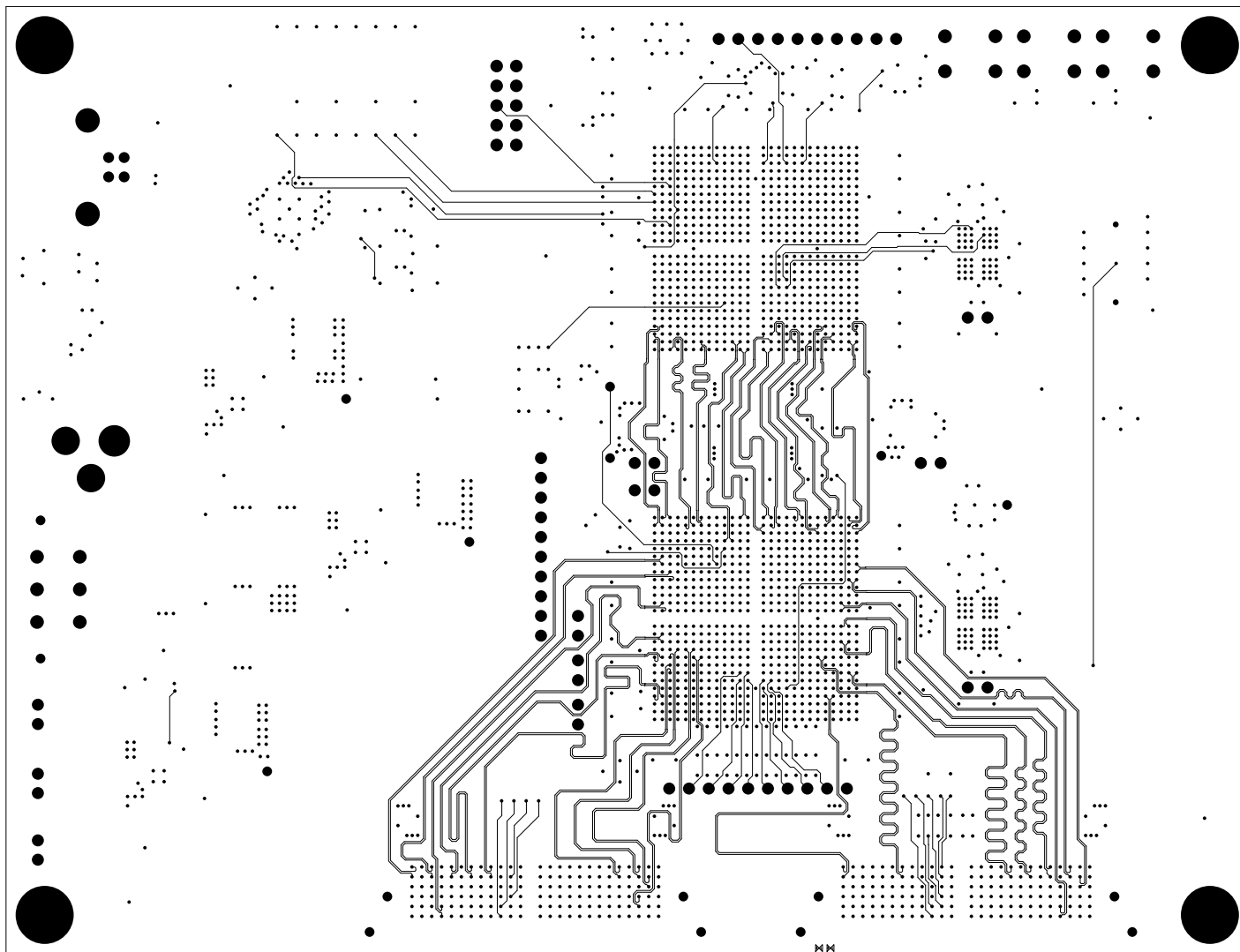


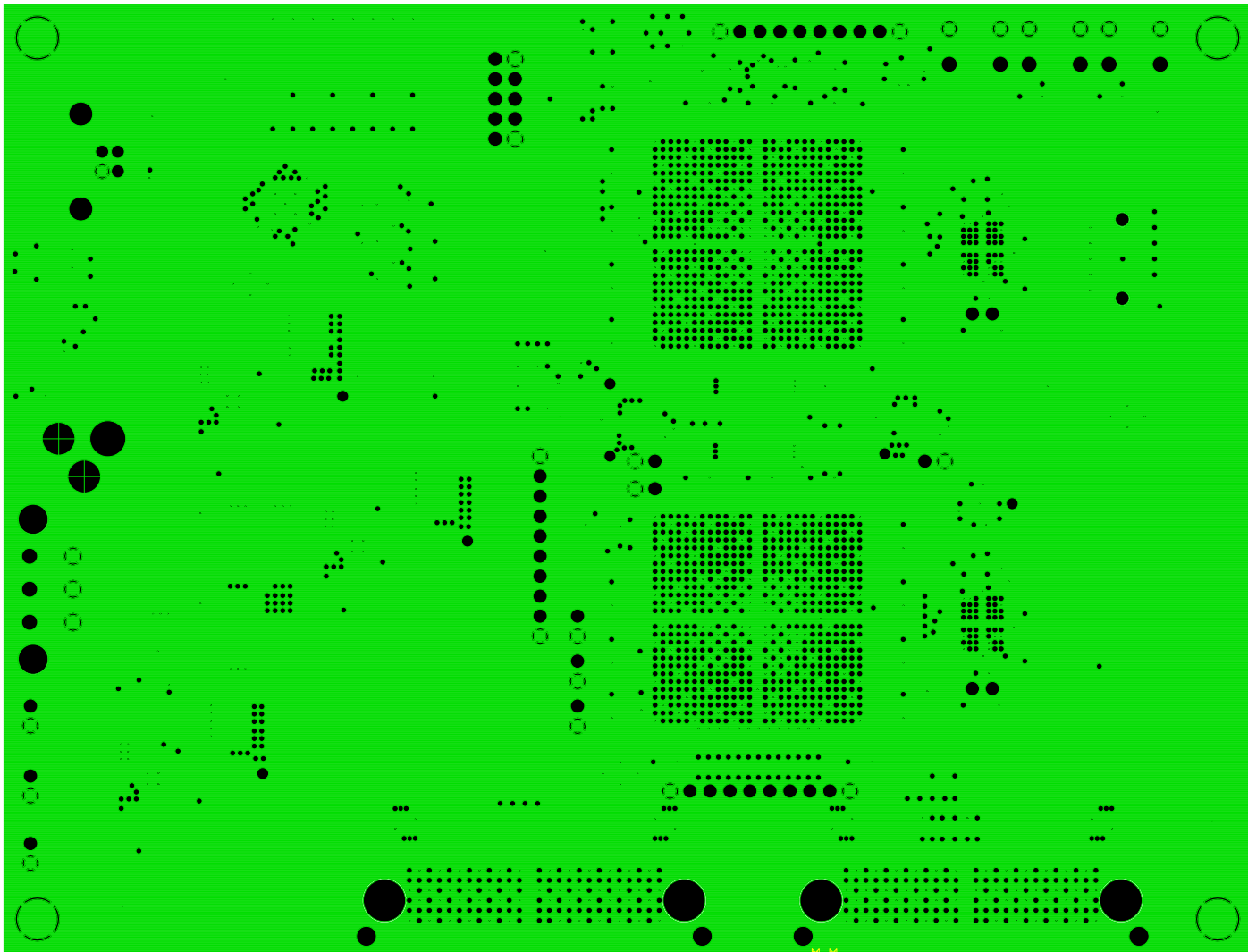
LAYER 1 - PRIMARY SIDE



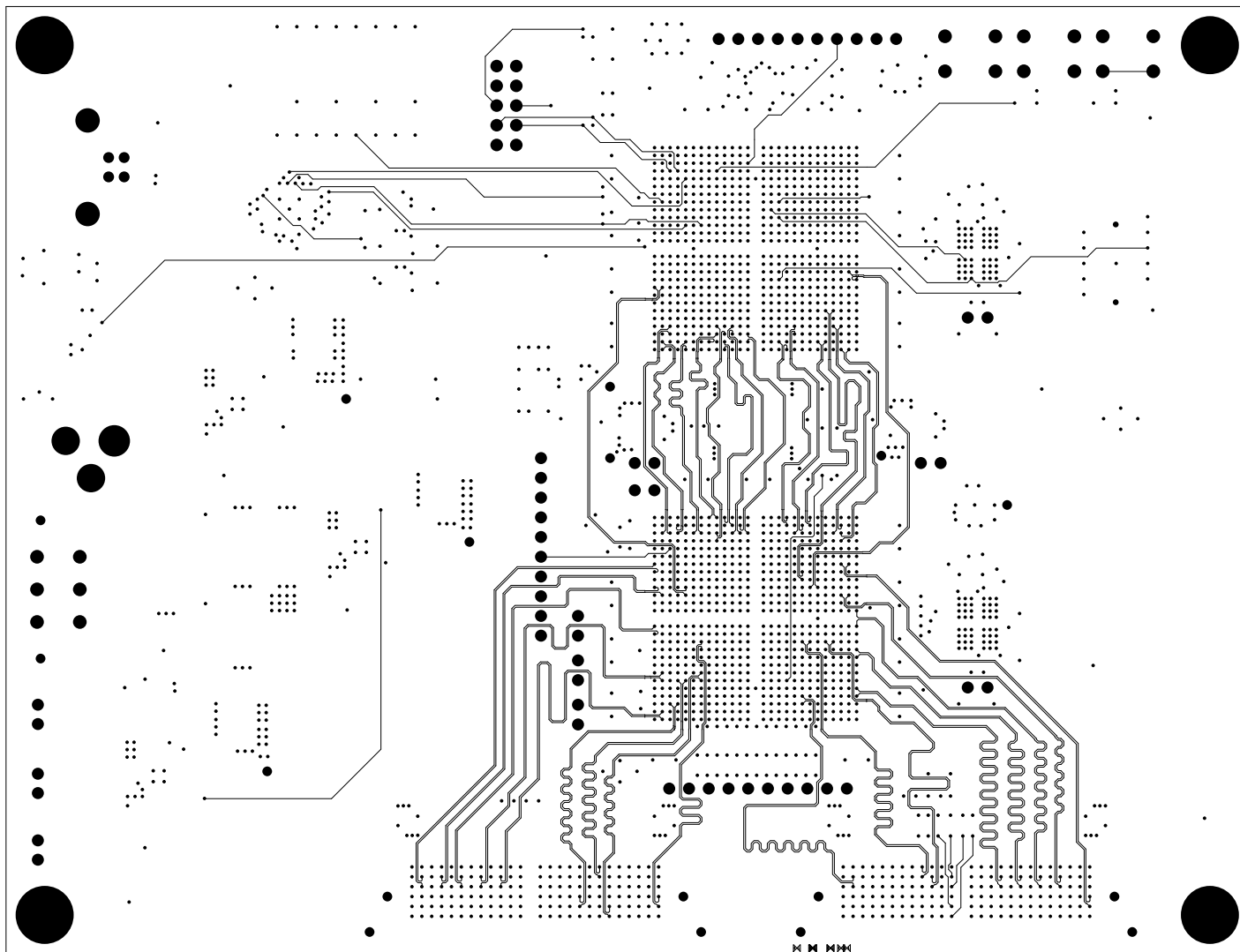
LAYER 2 - GND PLANE



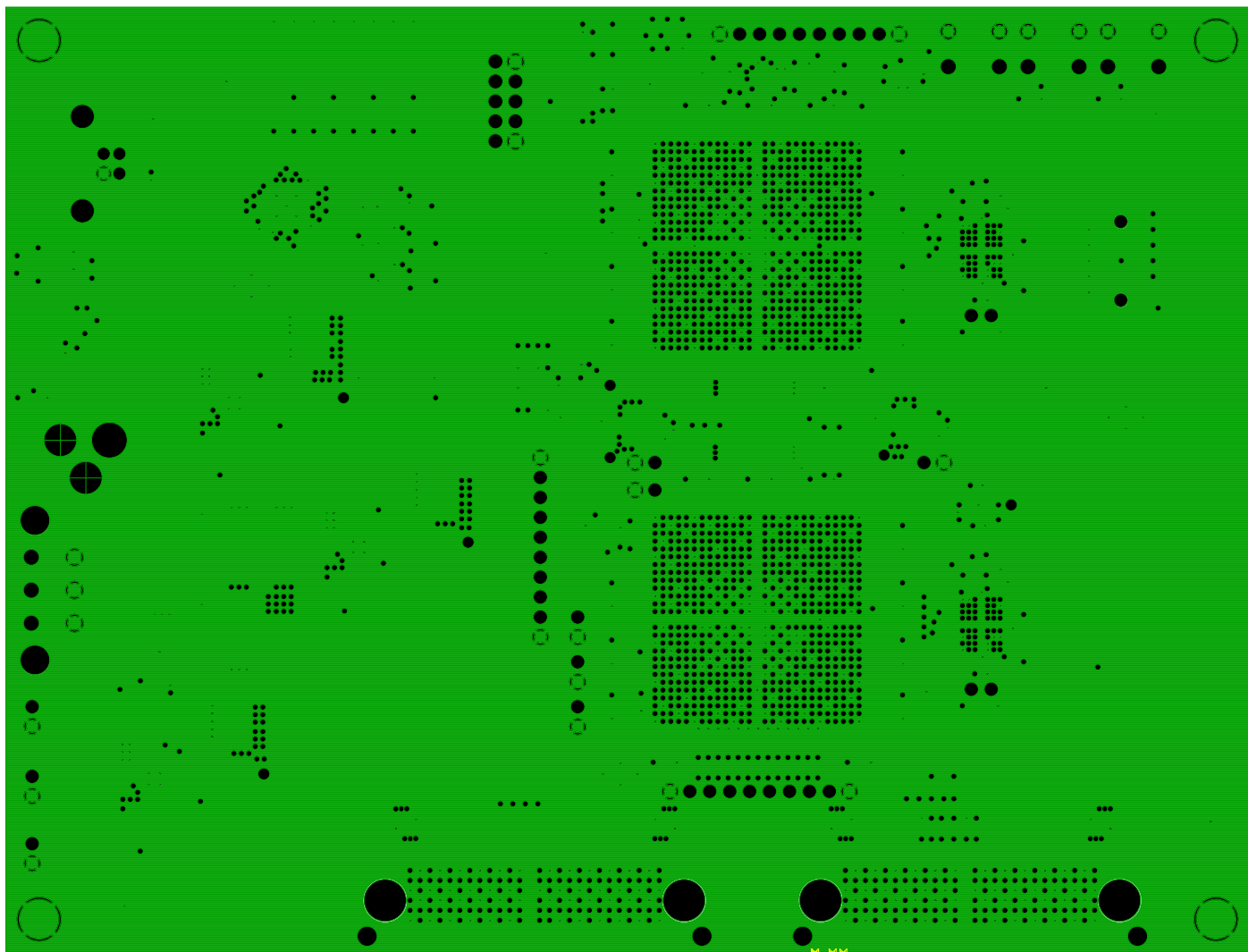
LAYER 3 - SIGNAL



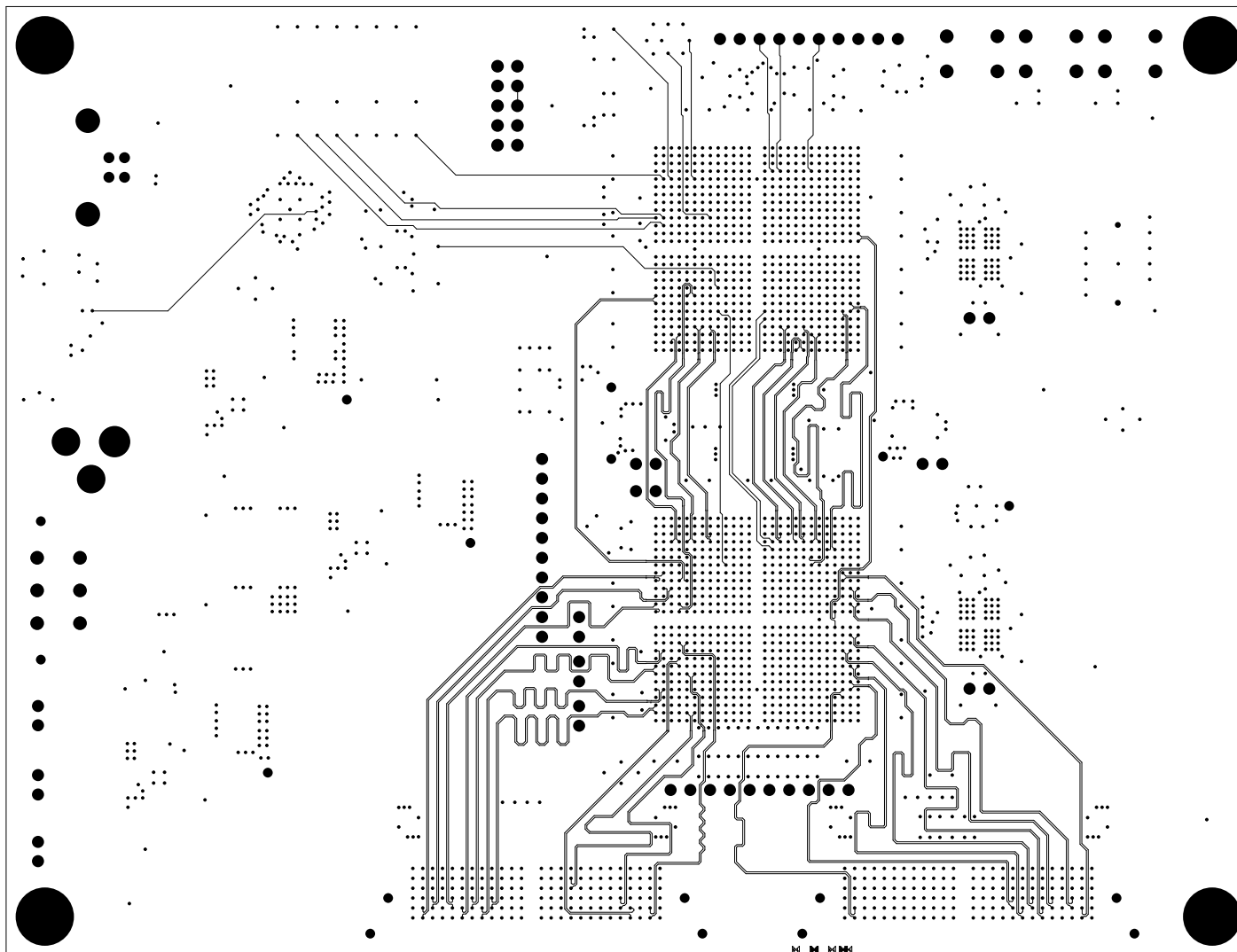
LAYER 4 - GND PLANE



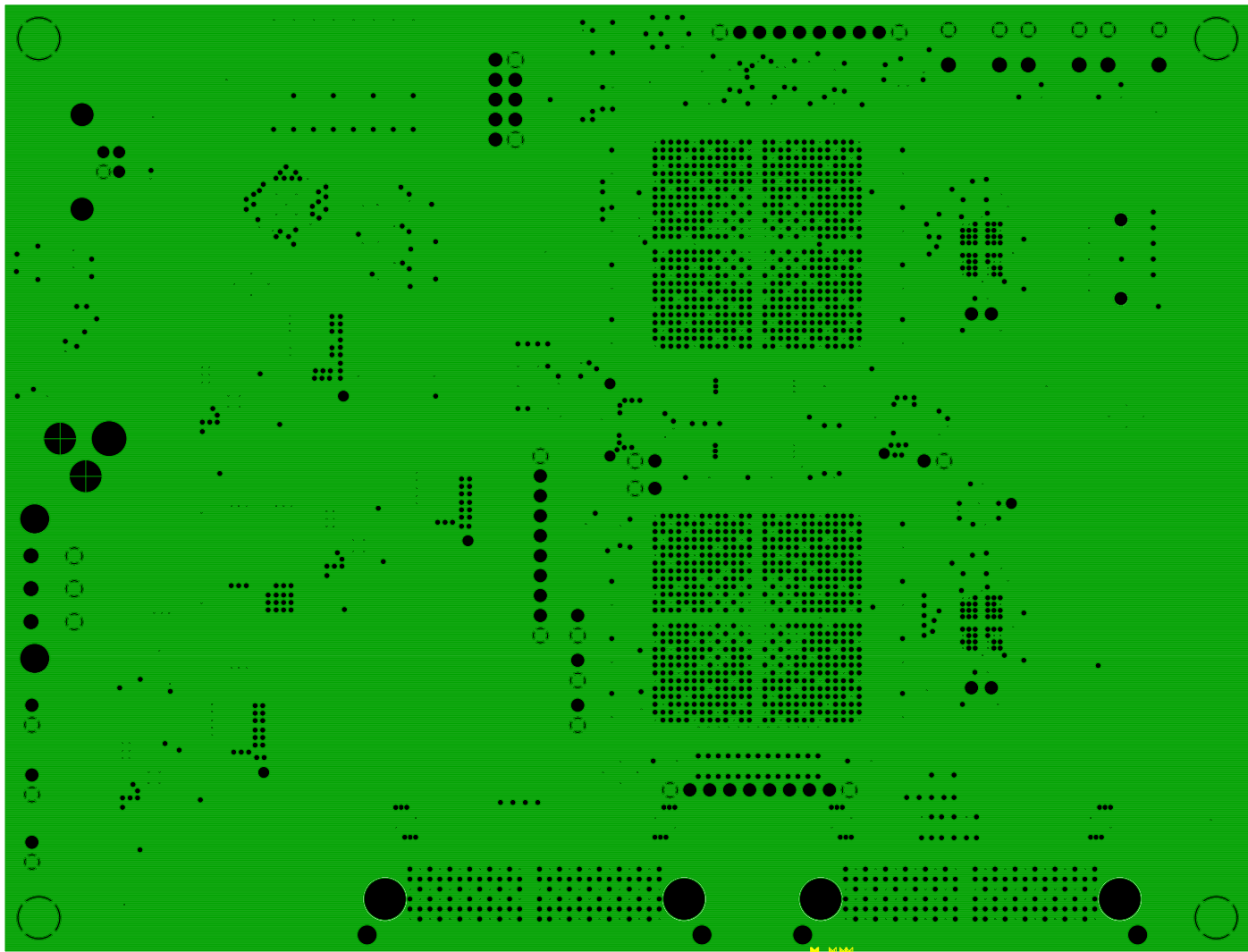
LAYER 5 - SIGNAL



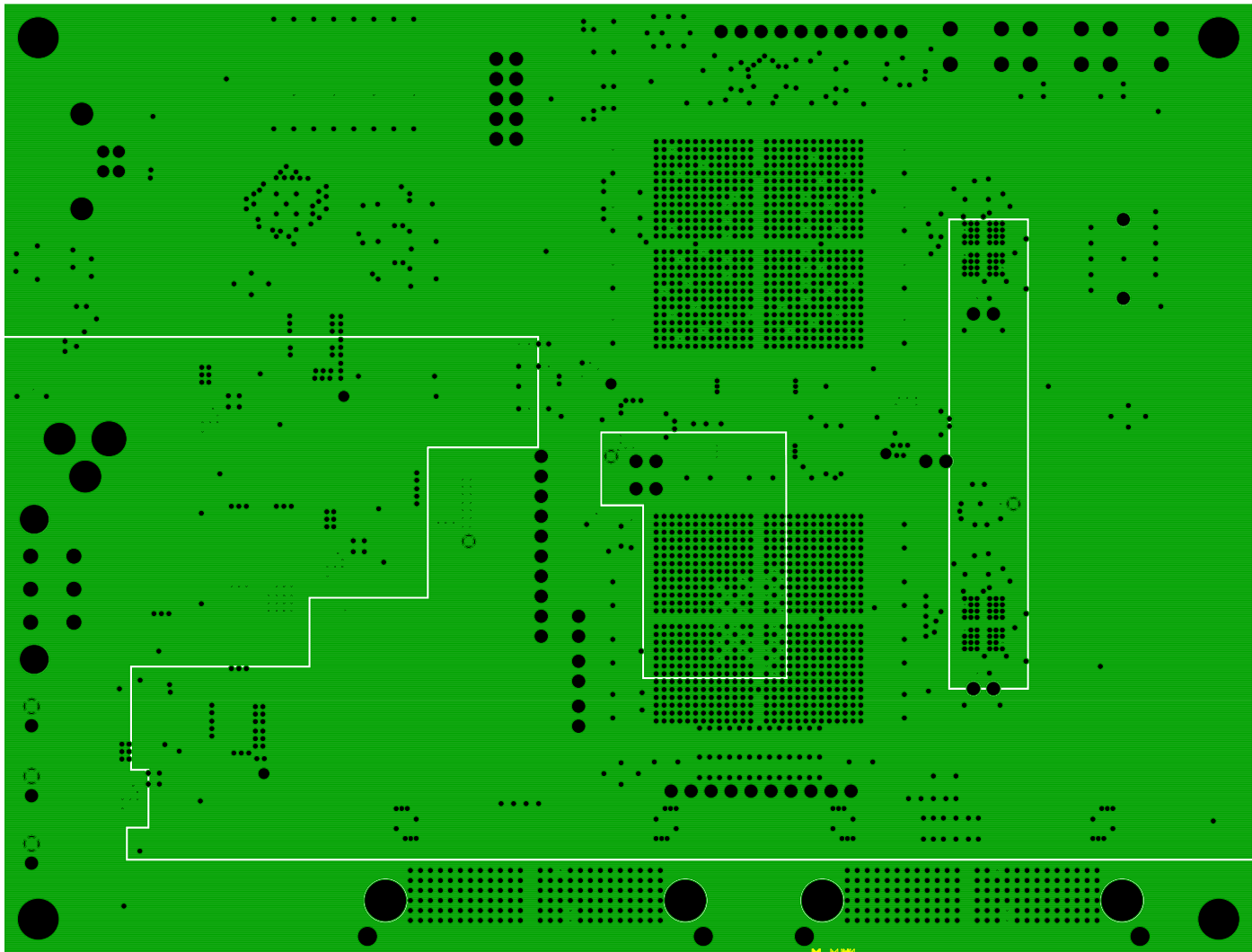
LAYER 6 - GND PLANE



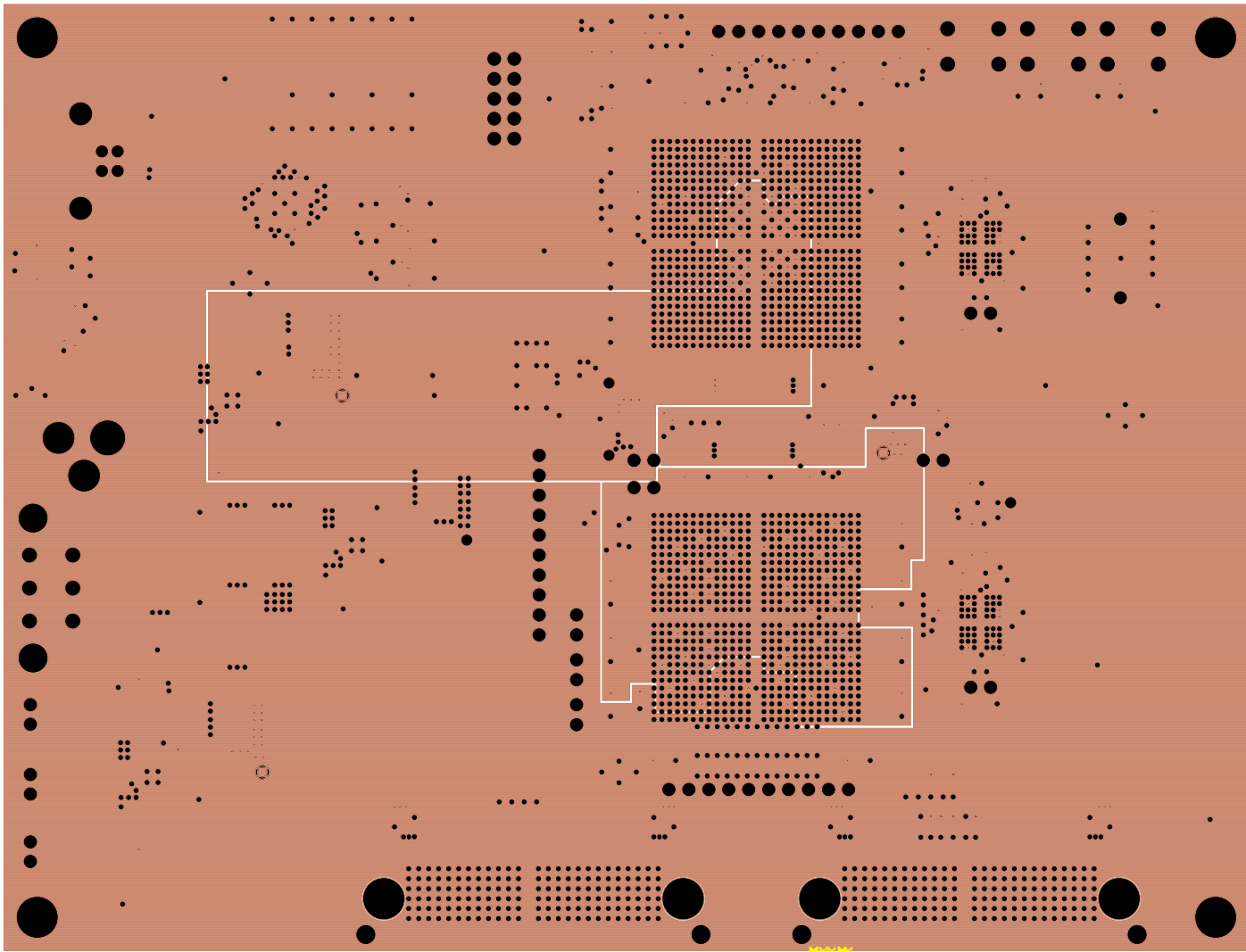
LAYER 7 - SIGNAL



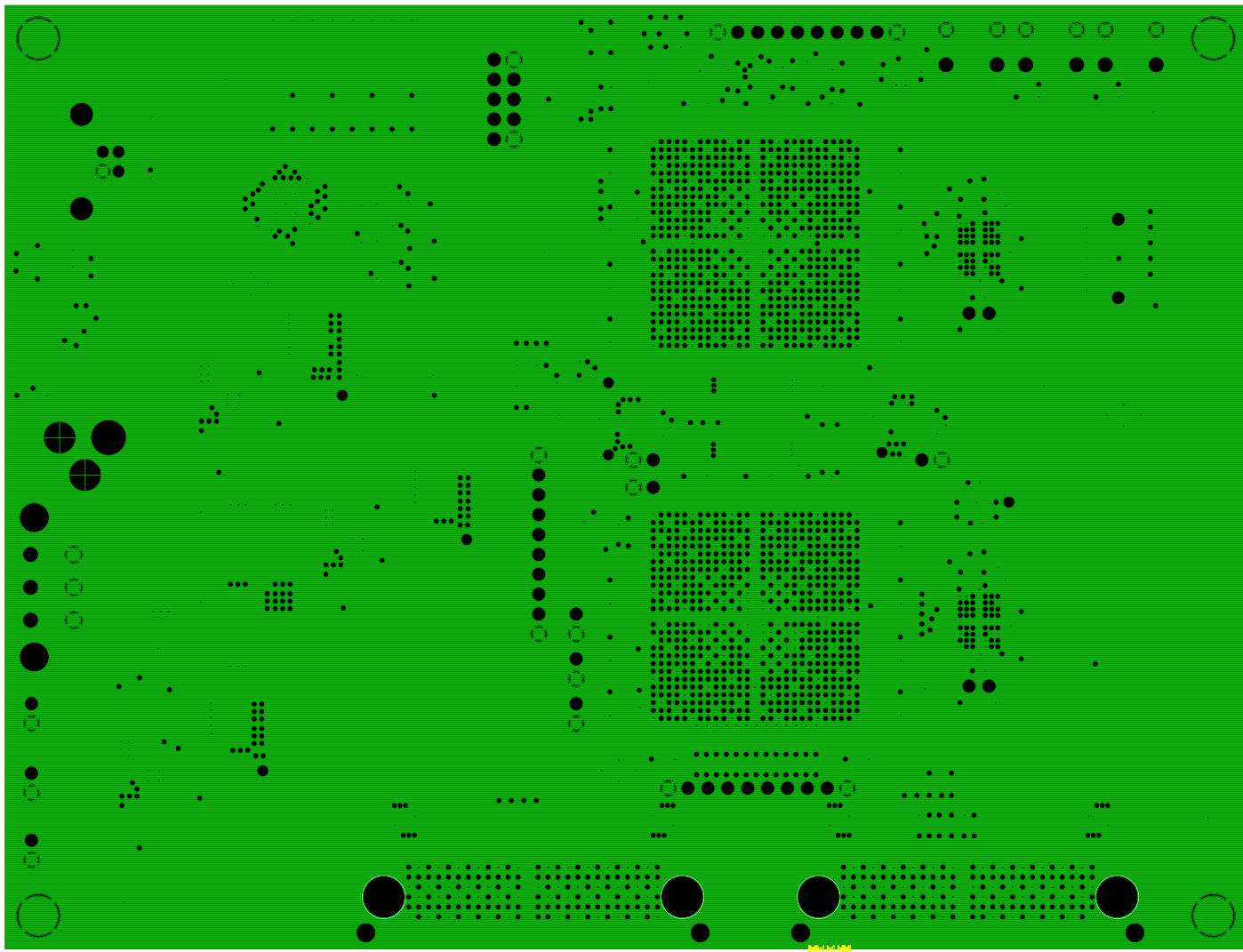
LAYER 8 - GND PLANE



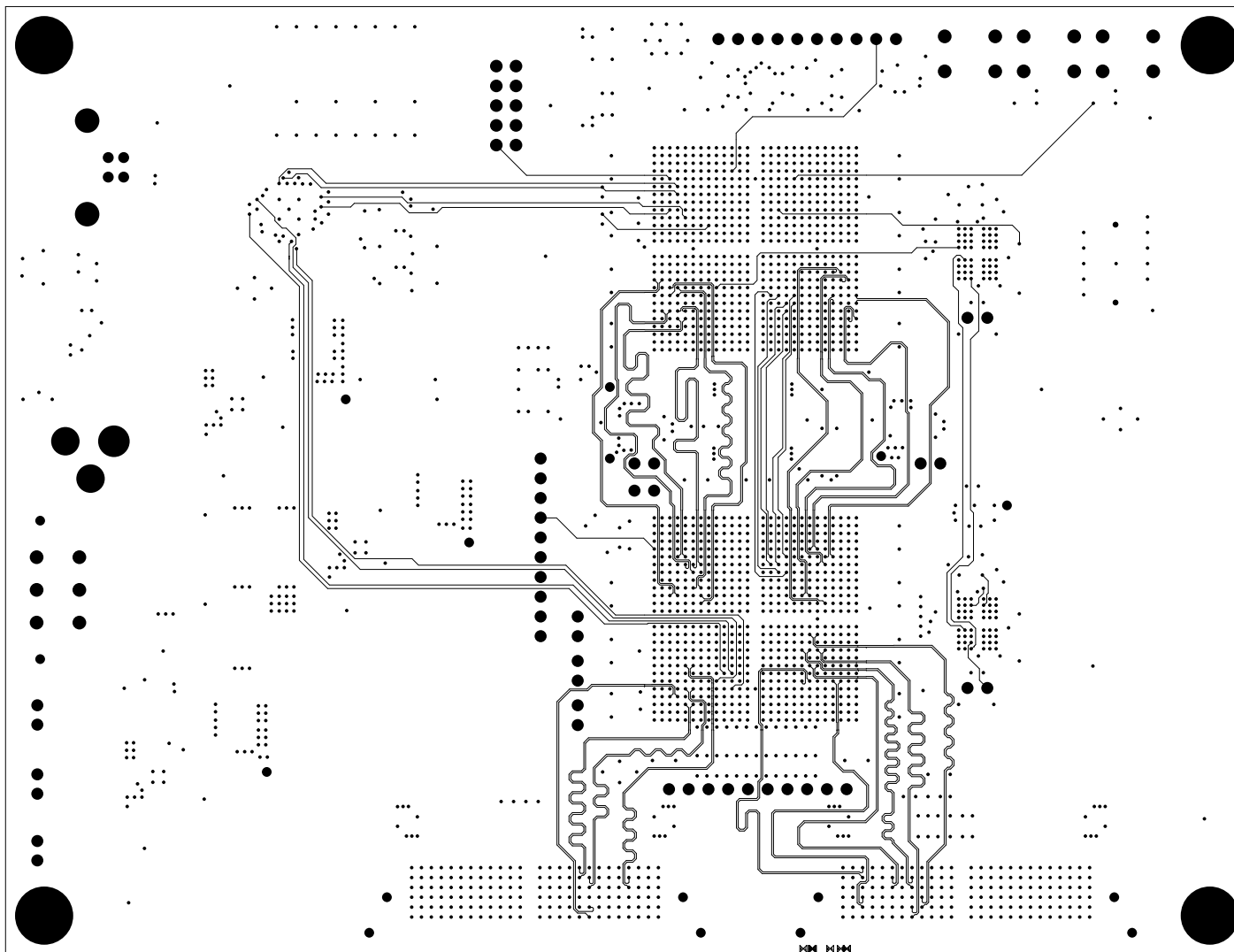
LAYER 9 - PWR PLANE



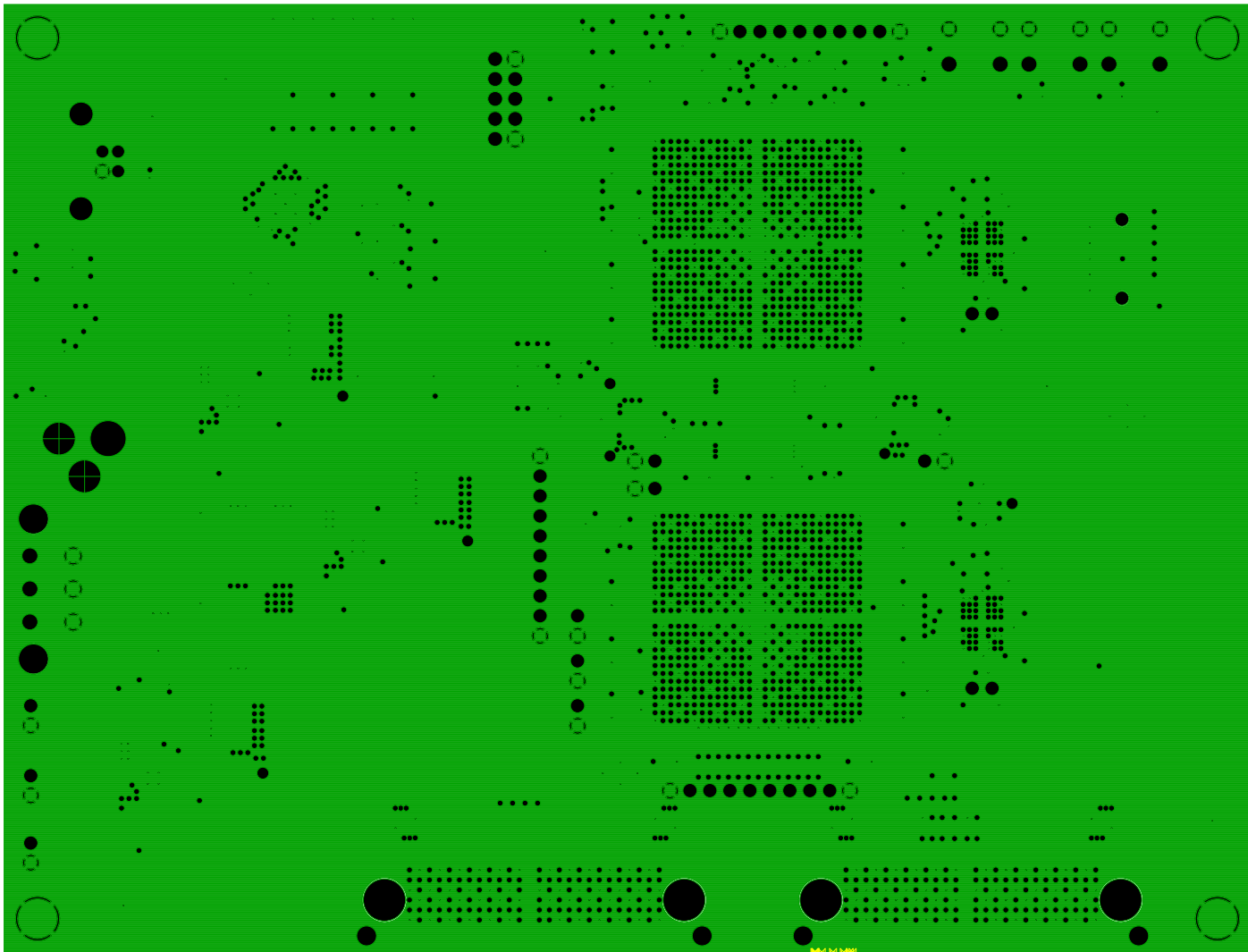
LAYER 10 - PWR PLANE



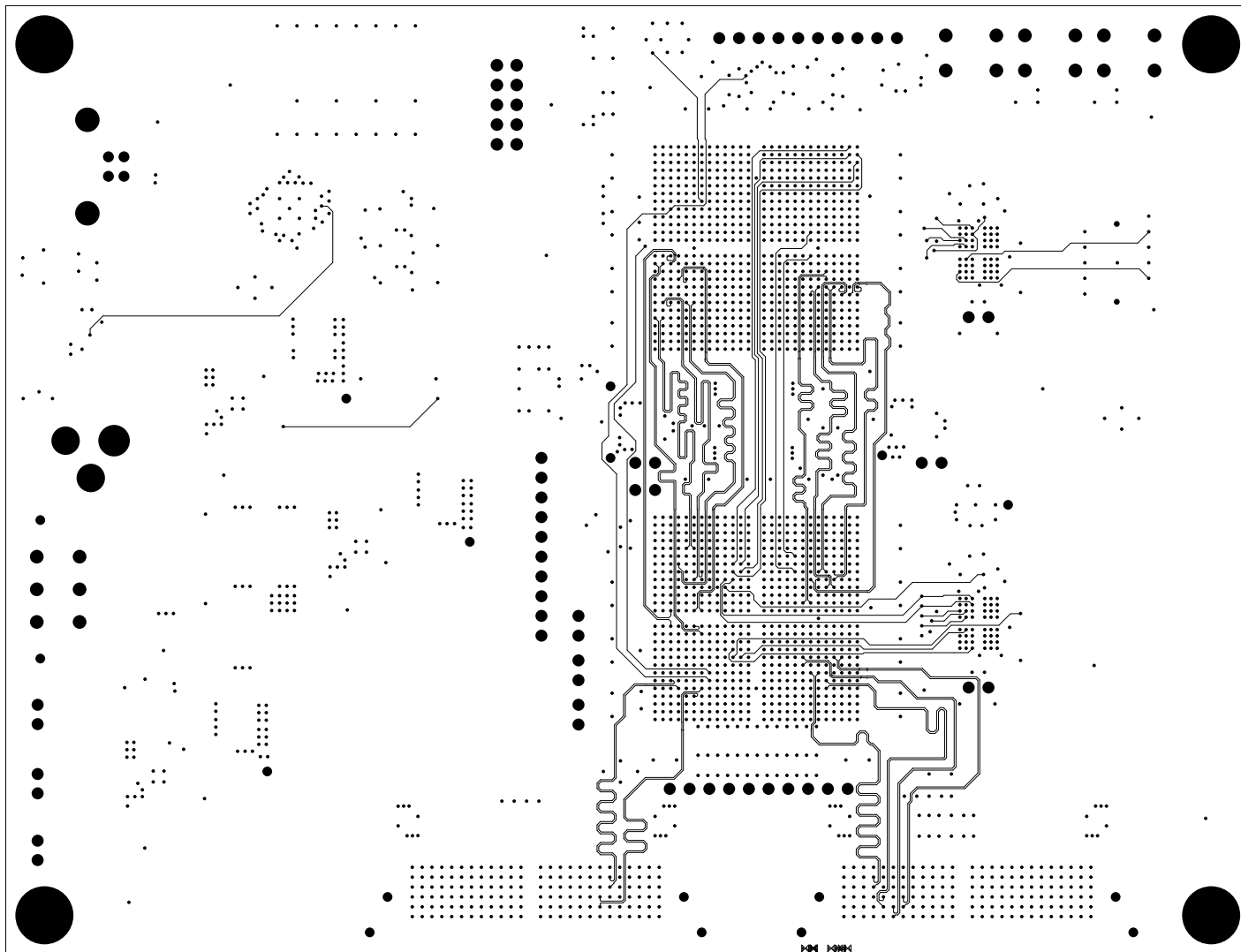
LAYER 11 - GND PLANE



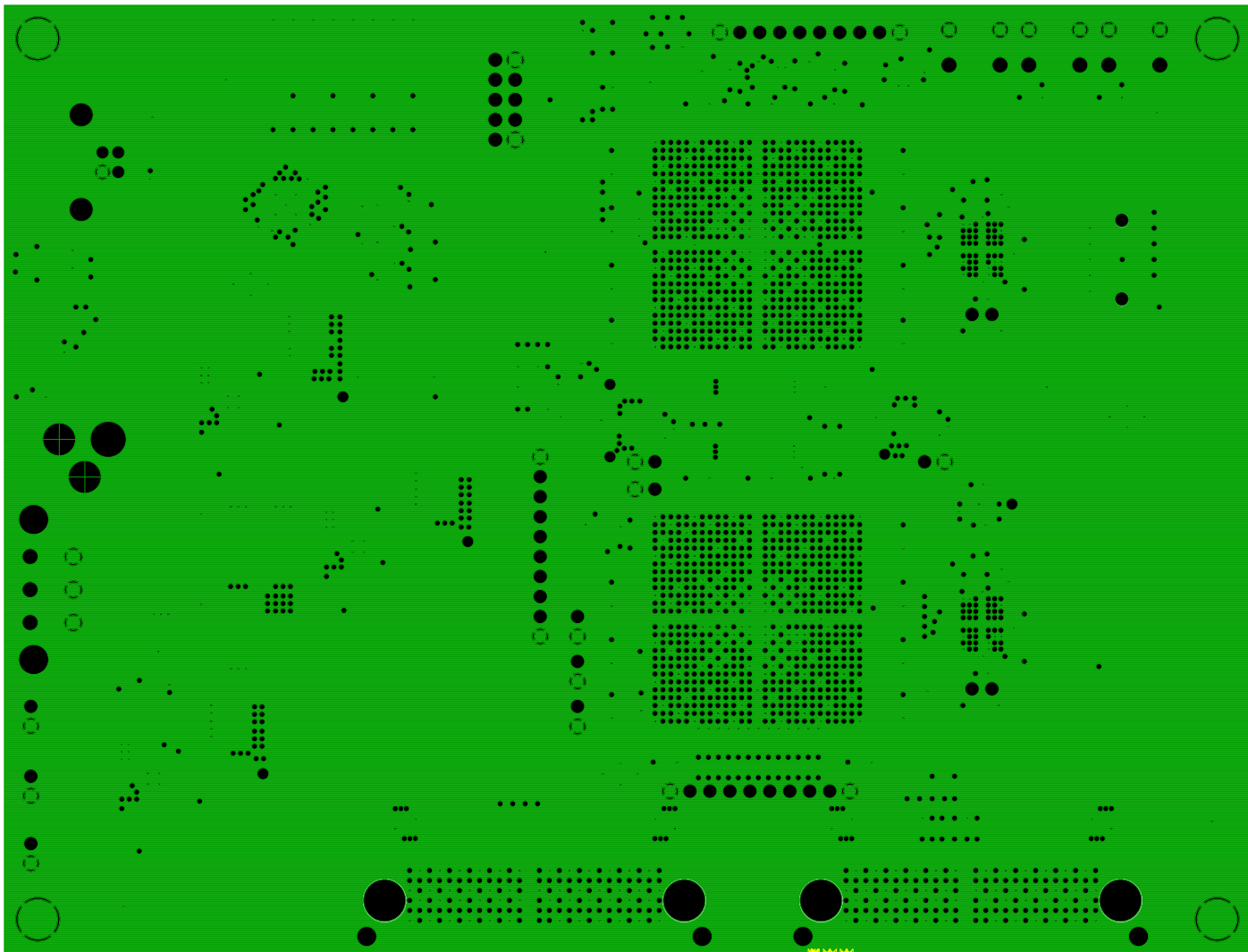
LAYER 12 - SIGNAL



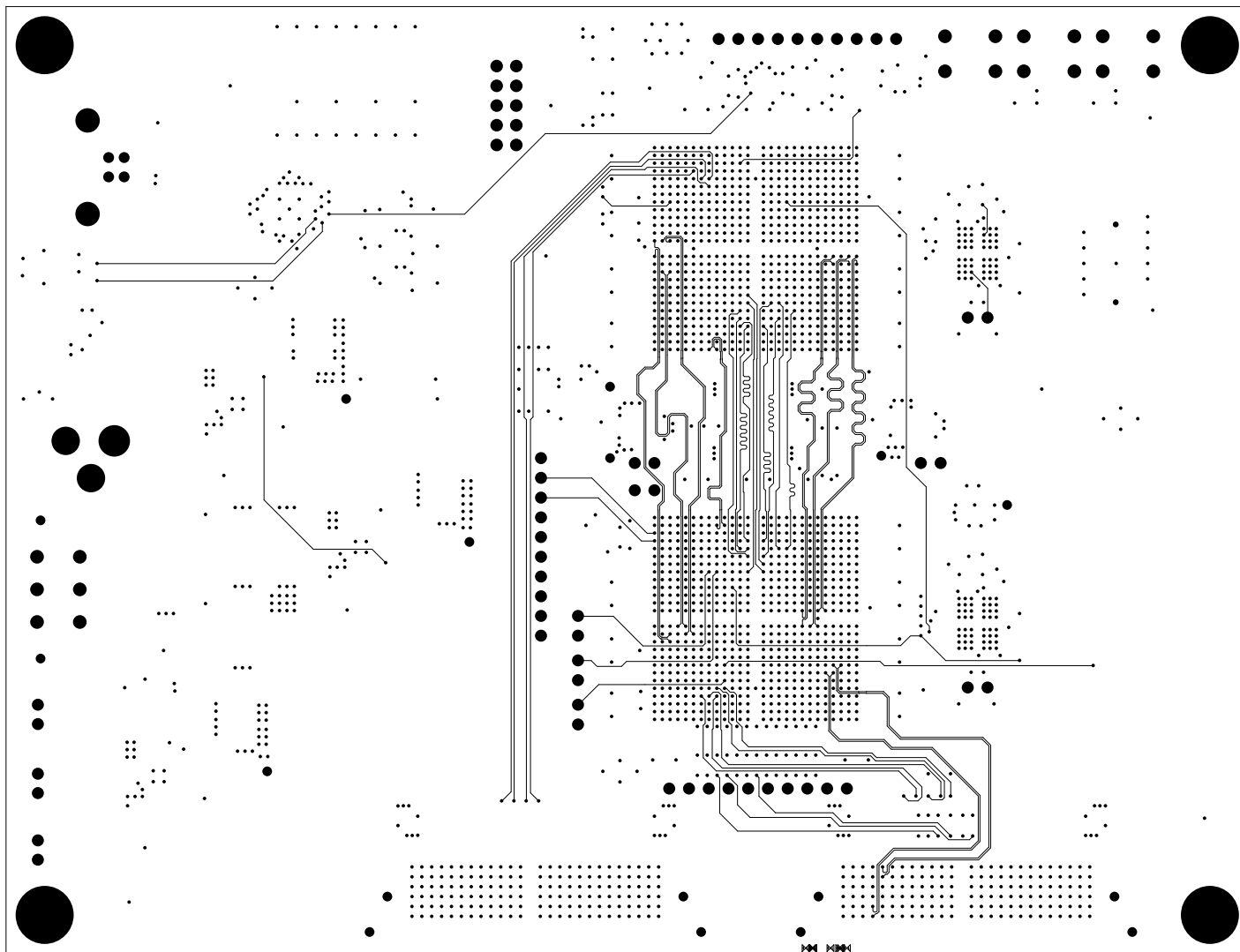
LAYER 13 - GND PLANE



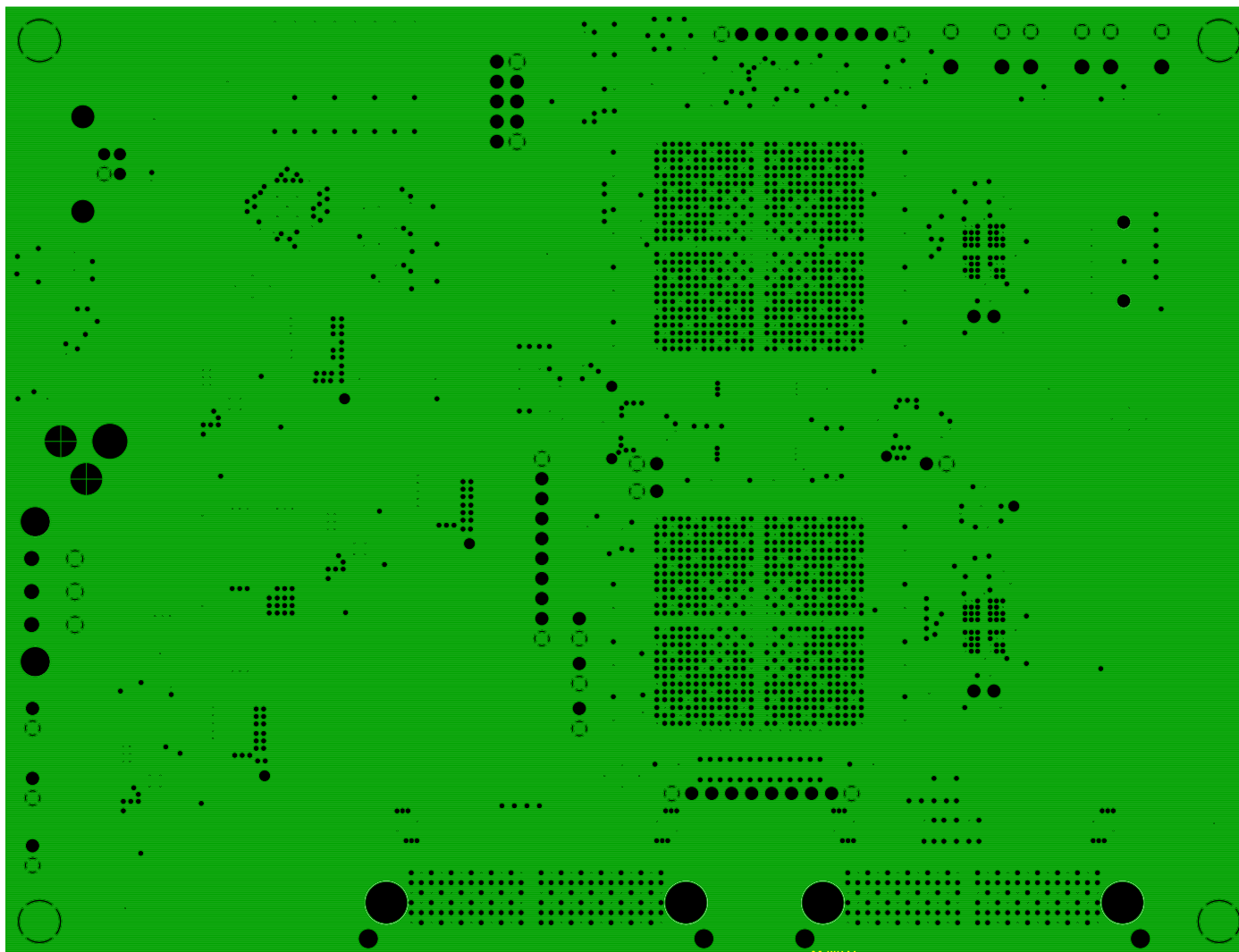
LAYER 14 - SIGNAL



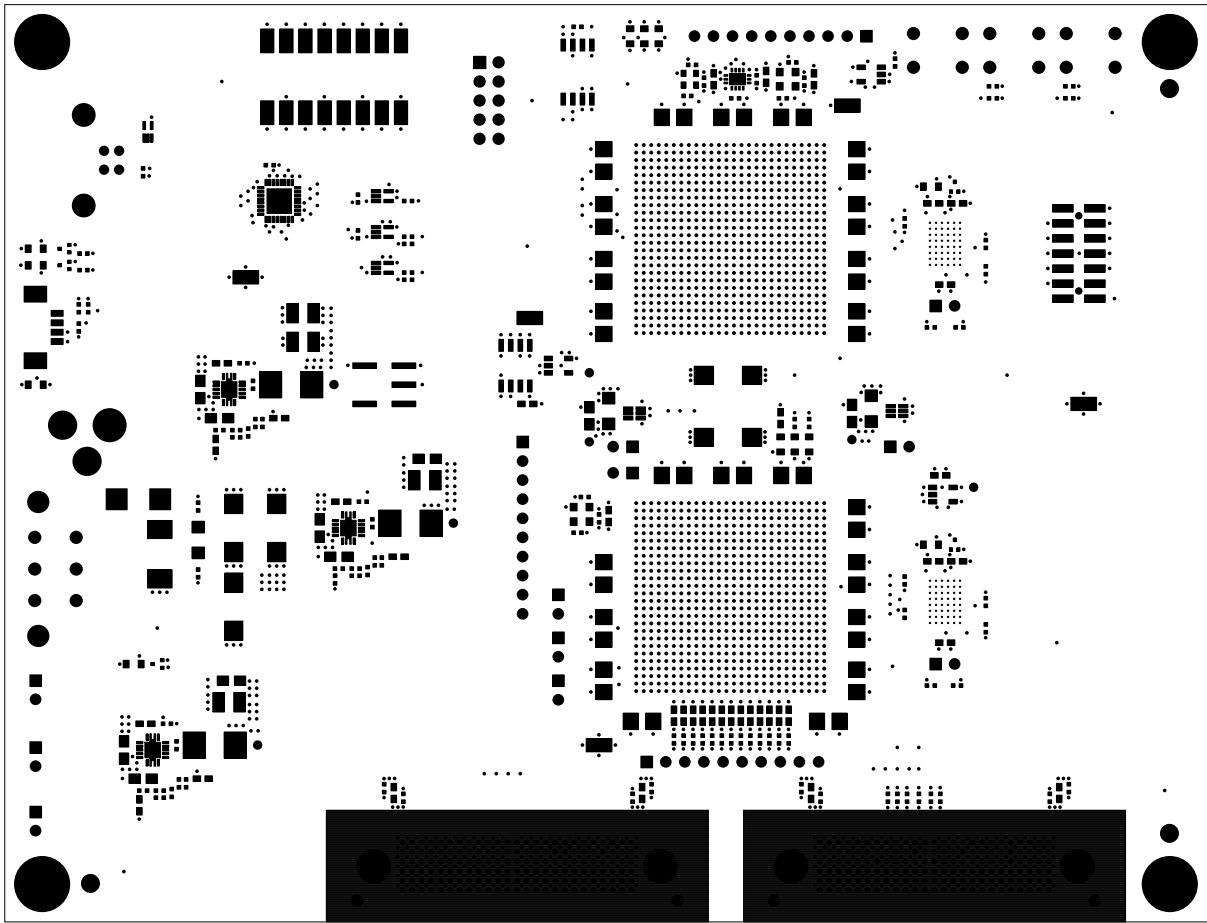
LAYER 15 - GND PLANE



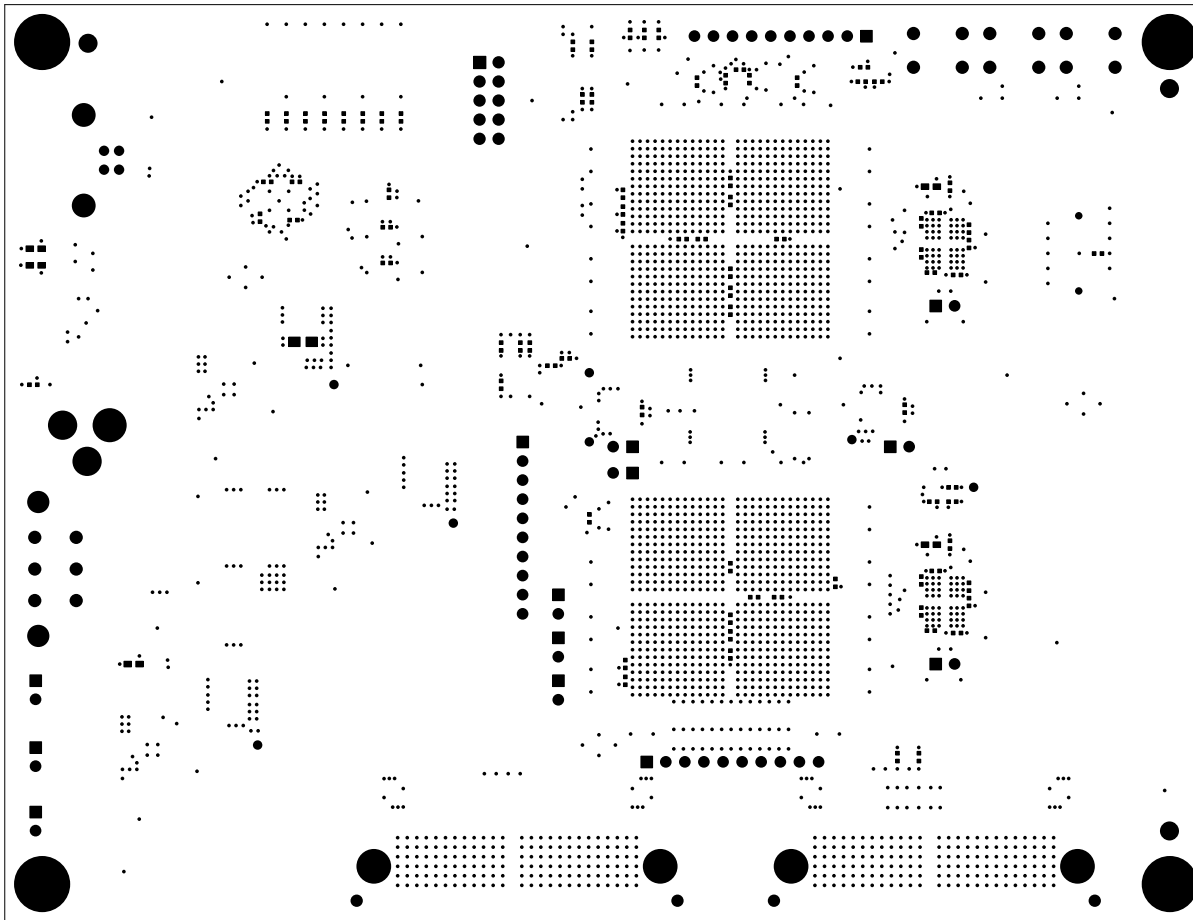
LAYER 16 - SIGNAL



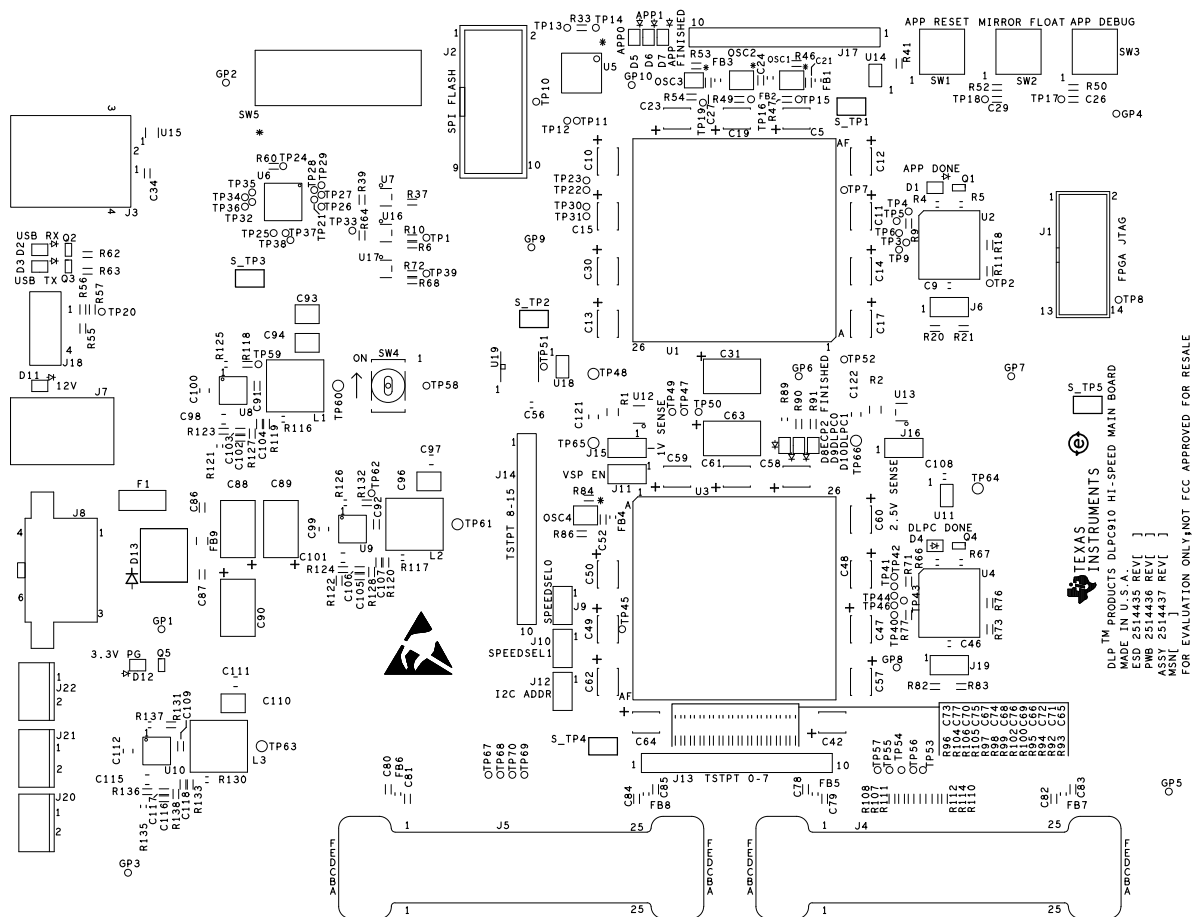
LAYER 17 - GND PLANE



CUSTOMER NAME		TEXAS INSTRUMENTS			
BOARD NAME			DESCRIPTION		
DLPC910 HI SPEED MAIN BOARD			SOLDERMASK - PRIMARY SIDE		
BOARD NO.	2514436	REV	DATE	PRJ#	SH OF
		A	1-MAY-2015	TIDL-109433-01	19 25



CUSTOMER NAME		TEXAS INSTRUMENTS			
BOARD NAME			DESCRIPTION		
DLPC910 HI SPEED MAIN BOARD			SOLDERMASK - SECONDARY SIDE		
BOARD NO.	2514436	REV	DATE	PRJ#	SH OF
		A	1-MAY-2015	TIDL-109433-01	20 25



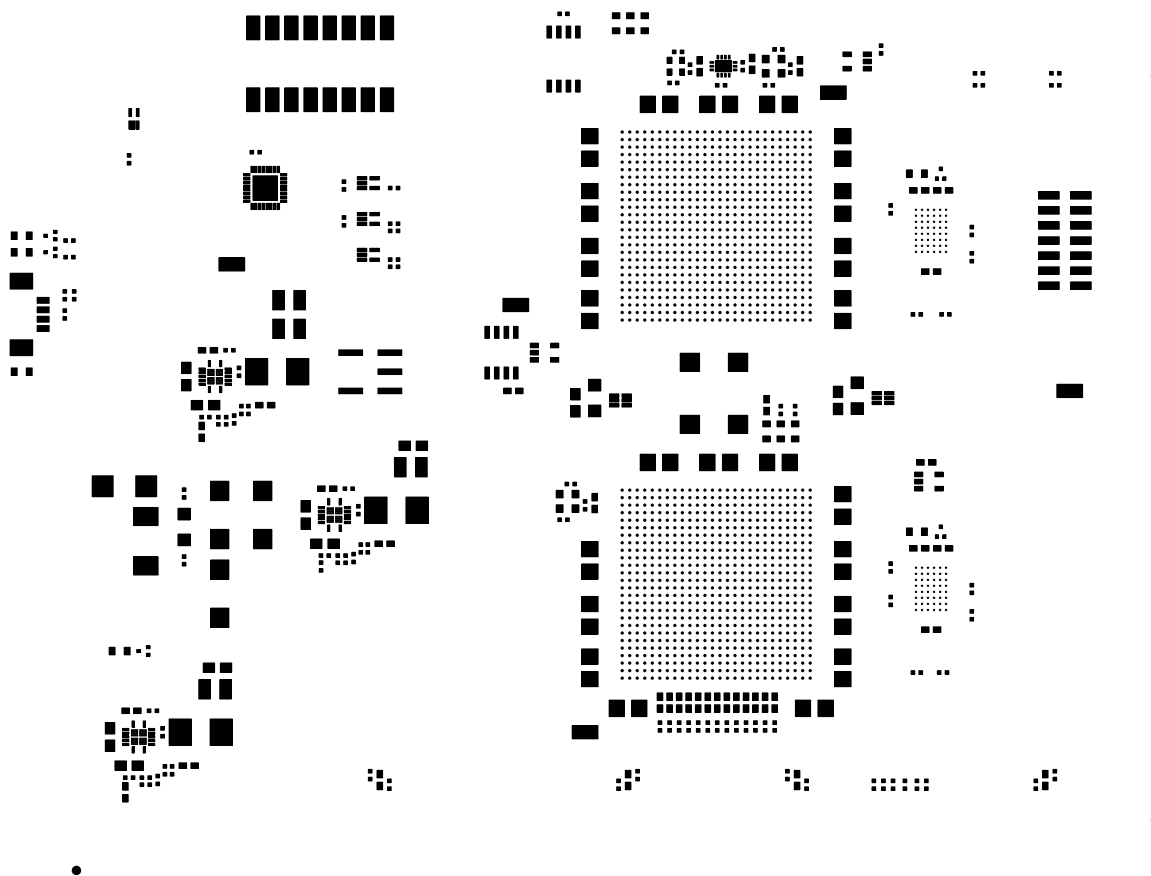
TEXAS
INSTRUMENTS
DLPC910 HI-SPEED MAIN BOARD
MADE IN U.S.A.
ESD 2514435 REV[]
PWB 2514436 REV[]
ASST 2514437 REV[]
MONT 2514437 REV[]
FOR EVALUATION ONLY NOT FCC APPROVED FOR RESALE



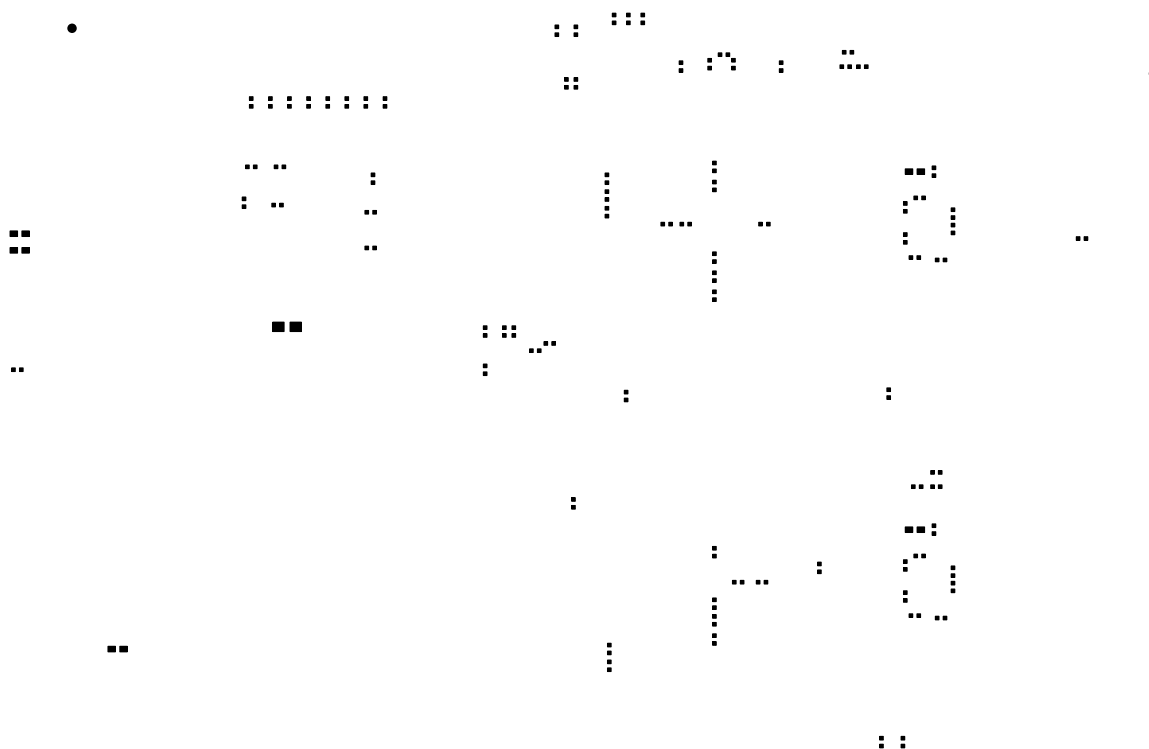
CUSTOMER NAME		TEXAS INSTRUMENTS			
BOARD NAME		DESCRIPTION			
DLPC910 HI SPEED MAIN BOARD		SILKSCREEN - PRIMARY SIDE			
BOARD NO.	2514436	REV	A	DATE	1-MAY-2015
PRJ#	TIDL-109433-01	SH	21	OF	25



CUSTOMER NAME										TEXAS INSTRUMENTS																			
BOARD NAME										DESCRIPTION																			
DLPC910 HI SPEED MAIN BOARD										SILKSCREEN - SECONDARY SIDE																			
BOARD NO.					REV					DATE					PRJ#					SH					OF				
2514436					A					1-MAY-2015					TIDL-109433-01					22					25				



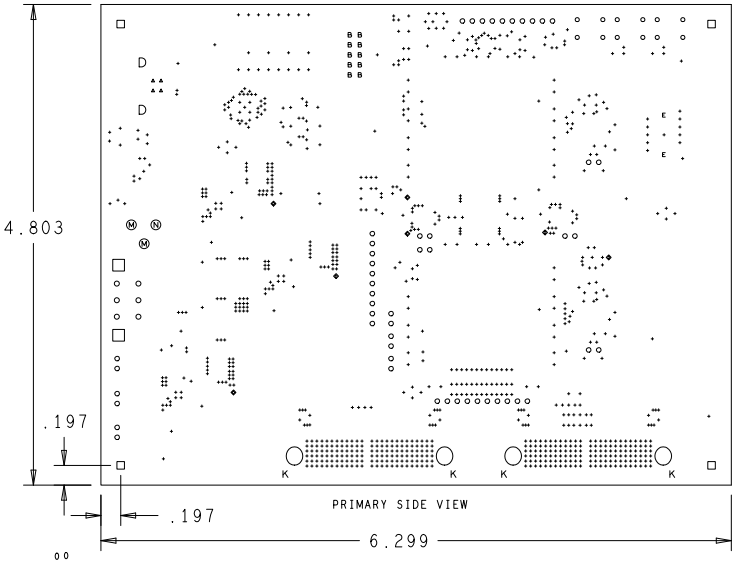
CUSTOMER NAME		TEXAS INSTRUMENTS			
BOARD NAME			DESCRIPTION		
DLPC910 HI SPEED MAIN BOARD			SOLDERPASTE - PRIMARY SIDE		
BOARD NO.	2514436	REV	DATE	PRJ#	SH OF
		A	1-MAY-2015	TIDL P-109433-01	23 25



CUSTOMER NAME		TEXAS INSTRUMENTS			
BOARD NAME			DESCRIPTION		
DLPC910 HI SPEED MAIN BOARD			SOLDERPASTE - SECONDARY SIDE		
BOARD NO.	2514436	REV	DATE	PRJ#	SH OF
		A	1-MAY-2015	TIDL-109433-01	24 25

LAYER STACK-UP - ALL DIMENSIONS IN INCHES				
50ohm SINGLE ENDED IMPEDANCE CONTROL +/- 10% 90ohm DIFFERENTIAL IMPEDANCE CONTROL +/- 10% 100ohm DIFFERENTIAL IMPEDANCE CONTROL +/- 10%				
LAYER#	COPPER WEIGHT (oz)	TRACE WIDTH	TRACE WIDTH / SPACE	TRACE WIDTH / SPACE
LAYER 1 - PRIMARY SIDE - SIGNAL	HALF-PLATING	0.0048	0.00475/0.00725	
LAYER 2 - GROUND PLANE	H			
LAYER 3 - SIGNAL	H	0.005		0.004/ 0.005
LAYER 4 - GROUND PLANE	H			
LAYER 5 - SIGNAL	H	0.005		0.004/ 0.005
LAYER 6 - GROUND PLANE	H			
LAYER 7 - SIGNAL	H	0.005		0.004/ 0.005
LAYER 8 - GROUND PLANE	H			
LAYER 9 - SPLIT POWER PLANE	H			
LAYER 10 -SPLIT POWER PLANE	H			
LAYER 11 -GROUND PLANE	H			
LAYER 12 -SIGNAL	H	0.005		0.004/ 0.005
LAYER 13 -GROUND PLANE	H			
LAYER 14- SIGNAL	H	0.005		0.004/ 0.005
LAYER 15 -GROUND PLANE	H			
LAYER 16 -SIGNAL	H	0.005		0.004/ 0.005
LAYER 17 -GROUND PLANE	H			
LAYER 18- SECONDARY SIDE - SIGNAL	HALF-PLATING	0.0048		

DRILL CHART: TOP to BOTTOM				
ALL UNITS ARE IN MILS				
FIGURE	SIZE	TOLERANCE	PLATED	QTY
.	10.0	+0.0/-10.0	PLATED	2410
*	30.0	+3.0/-3.0	PLATED	7
+	36.0	+3.0/-3.0	PLATED	4
o	40.0	+3.0/-3.0	PLATED	12
o	42.0	+3.0/-3.0	PLATED	52
•	45.0	+3.0/-3.0	PLATED	10
o	50.0	+3.0/-3.0	PLATED	6
D	90.0	+3.0/-3.0	PLATED	2
⊗	120.0	+3.0/-3.0	PLATED	2
⊗	140.0	+3.0/-3.0	PLATED	1
□	180.0	+3.0/-3.0	PLATED	4
ε	40.0	+3.0/-3.0	NON-PLATED	2
K	66.0	+3.0/-3.0	NON-PLATED	4
□	118.0	+3.0/-3.0	NON-PLATED	2
○	182.0	+3.0/-3.0	NON-PLATED	4



- FAB NOTES:**
1. ALL DIMENSIONS ARE IN INCHES, UNLESS OTHERWISE NOTED.
 2. THE PWB SHALL BE FABRICATED TO IPC-6012, CLASS 2 AND WORKMANSHIP SHALL CONFORM TO IPC-A-600, CLASS 2. CURRENT REVISIONS.
 3. BOARD MATERIAL SHALL BE HITACHI MCL-HE-079G OR EQUIVALENT. RnHS COMPLIANT AND LEAD FREE ASSEMBLY CAPABLE. BOARD MATERIAL SHALL MEET OR EXCEED IPC-4101B. COLOR: NATURAL.
 4. BOARD MATERIAL & CONSTRUCTION TO BE U.L. APPROVED AND MARKED ON THE FINISHED BOARD.
 5. MINIMUM COPPER WALL THICKNESS OF PLATED-THRU HOLES TO BE .001 INCH, WITH A MINIMUM ANNUAL RING OF .002 INCH.
 6. OVERALL BOARD THICKNESS TO BE .095 +/- 10% AND APPLIES AFTER ALL LAMINATION AND PLATING PROCESSES, MEASURED FROM COPPER TO COPPER.
 7. MAX. WARP & TWIST TO BE .0075 INCHES PER INCH.
 8. BOARD MUST BE ELECTRICALLY TESTED USING SUPPLIED IPC-D-356 NETLIST.
 9. PLATED THROUGH SLOT INDICATED WITH MULTIPLE DRILL HITS SHOULD BE FINISHED AS SMOOTH WALL BY VENDOR.
 10. FABRICATOR SHOULD REMOVE ANY UNUSED PADS ON INTERNAL LAYERS.
- PROCESS NOTES:**
1. EXCEPT AS NOTED BELOW, PLATE ALL EXPOSED AREAS WITH ELECTROLESS IMMERSION GOLD. NICKEL 150 MICROINCHES THK MIN. GOLD 5-15 MICROINCHES THK MIN.
 1. PLATE ALL THE PAD AREAS OF J4 AND J5 TOP SIDE, WITH A MINIMUM OF 35 AND MAXIMUM 50 MICRO-INCHES OF ELECTROLYTIC HARD GOLD OVER A MINIMUM OF 100 MICRO-INCHES OF ELECTROLYTIC NICKEL.
 2. APPLY LPI: SOLDERMASK OVER BARE COPPER (SMOBC). COLOR: GREEN. SOLDERMASK SHALL CONFORM TO IPC-SM-840, CLASS H, CURRENT REV.
 3. SOLDERMASK ARTWORK HAS ZERO (0) OVERSIZED PADS. FABRICATION VENDOR IS ALLOWED TO ADJUST THE COMPONENT SOLDERMASK PADS TO MEET THEIR TOOLING REQUIREMENTS.
 4. APPLY LPI: SILKSCREEN OR EQUIVALENT PER THE ARTWORK. COLOR: WHITE.

CUSTOMER NAME		TEXAS INSTRUMENTS	
BOARD NAME	DESCRIPTION		
DLPC910 HI SPEED MAIN BOARD	DRILL DRAWING		
BOARD NO.	REV	DATE	PLN
2514436	A	1-MAY-2015	TIDLPL-109433-01
		BH	25 OF 25